

## Morpho-molecular genetic assessment of five Quinoa (*Chenopodium quinoa* Willd) genotypes cultured under Egyptian climate conditions

Aya Abdalla<sup>1</sup>, H. Sherif<sup>2</sup>, I. Elshawaf<sup>3</sup>, T. Salim<sup>4</sup>, and A. Shams<sup>5</sup>

<sup>1</sup>B.Sc. Agricultural Science (Genetic), Fac. Agri., Benha Univ,<sup>2,3</sup>Professor of Genetics, Department of Genetics and Genetic Engineering, Fac. Agri., Benha University,<sup>4</sup>Doctor of Genetics, Fac. Agri., Benha University,<sup>5</sup>Researcher at Crop Intensification Research Department in Agricultural Research Center.

Corresponding author: [osha2053@yahoo.com](mailto:osha2053@yahoo.com).

### ABSTRACT

Four introduced quinoa genotypes, moreover one recently domesticated variety were utilized as a part of the present study. Domesticated variety acquired the name Giza1, while the other introduced genotypes named Q18, Q21, Q22, and Q29. First genotype obtained from Denmark, the other genotypes introduced from Chile. All genotypes cultured in a randomized complete block design with four replications in two locations Moshtohor in Qalyubiya governorate, and Nabit at Sharqia governorate. This investigation included six imperative attributes influencing the yield, 1) plant tallness (cm), 2) number of branches/plant, 3) primary head weight/plant (g), 4) weight of the 1000-grain (g), 5) grain yield weight /plant (g), 6) yield weight (kg/ha), 7) life cycle length (day). Statistical analysis of the two characters branches number / plant, and life cycle length detects no significant differences between all genotypes. At the other side plant height with Q29 showing the lowest height 111.63 cm. Genotype Q18 was significantly the tallest (119.75). Main head weight gave lowest reading with the variety Giza1 (16 gram). The greatest value obtained from the genotype Q22. Fourth trait was grain yield per plant. Lowest means were obtained from the two genotypes Giza1 and Q18 with 13.12 and 19.75 gram respectively, while the two genotypes Q22, and Q29 record best results with means 19.38, and 19.5 consequently. Regarding 1000-grain weight the variety Giza1 gave also weakest reading 3.21 gram. At the other hand genotype Q22 gave superior 1000-grain weight 3.49 gram. Grain yield/ ha show weakest results with Q21, Giza1, and Q22 with means 2.14, 2.16, and 2.39 ton / ha respectively. Genotype Q29 gave 3.32 ton grain yield / ha. Total protein extracted from the five genotypes, to study the optimum conditions for preparing the protein isolate of quinoa seeds and investigates the physicochemical and functional properties of the isolated protein to assess the potential use of quinoa protein isolate in food applications and manufacturing. The protein isolate of quinoa was obtained by protein solubility at alkaline pH value, followed by precipitation at an acidic pH values (2, 4, and 6). SDS-PAGE showed protein bands with 177,8KDa and 34,91KDa potentially corresponding to cheno protein in some extraction pHs. Quinoa protein had reasonable concentrations of essential amino acids (except tryptophan) with a high level of lysine (17.13%). A sharp maximum solubility was observed at the pH value (4.0), and the maximum value was observed at the alkaline. Quinoa protein showed a high In Vitro digestibility.

**Keywords:** *Chenopodium quinoa*, genetic assessment, SDS-PAGE.

### Introduction

Quinoa (*Chenopodium quinoa* Willd) is a pseudo-grain and is one of the 250 plant species incorporated into the genus *Chenopodium* (Amaranthaceae), generally known as 'goosefoot' genus (Giusti 1970). The genus contains herbaceous, suffrutescent, and arborescent perennials, albeit most species are colonizing annuals (Fuentes et al. 2012). Quinoa alongside some verdant chenopods (*C. collection* and *C. giganteum*) will be essential to the nourishment security of minor ranchers as they demonstrate adjustment to numerous abiotic and biotic stresses and their capacity to develop with least supplies (Bhargava and Srivastava 2013). It is an allotetraploid ( $2n = 36$ ) annual, self-fertile crop as it indicates disomic inheritance for a large portion of the traits (Maughan et al. 2004).

The little seed of quinoa contains abalanced composition of carbohydrates, fat, and protein (Chauhan et al. 1992). Additionally, the protein isn't just higher (7.5– 22.1 %) than stable grains but on the other hand is made out of 9 amino acids being rich in

lysine, threonine, and methionine (Escuredo et al. 2014). The protein is of superb containing substantially higher substance of lysine than oats and even drain and being without gluten makes it appropriate for celiac (Stikic et al. 2012). Quinoa starch is available as little granules of around 1– 1.5  $\mu\text{m}$  in breadth and a normal molar mass of  $11.3 \times 10^6$  g/mol (Lindeboom 2005). The little granules and high consistency of quinoa starch make it valuable for particular modern applications, for example, tidying starches in makeup and elastic tire shape discharge specialists and as biodegradable fillers in low-thickness polyethylene (LDPE) films (Ahamed et al. 1996b). Quinoa starch because of its interesting mechanical properties can be used in the make of bearer sacks where elasticity is essential. As a result of the freeze– defrost dependability and protection from retro-degree the quinoa starch glue is extremely reasonable in the arrangement of solidified and emulsion-type nourishment items (Nisimba et al. 2008). It is likewise rich in fundamental vitamins and minerals, iron, and calcium. Quinoa has been selected by FAO (2014) as one of the crops destined to offer

food security in the 21st century, because the quinoa plants are tolerant to salinity and drought stress, and can grow on marginal regions (Jacobsen et al., 2003).

Objectives of the present study were to:

1. Quantify the genetic variability and diversity available in Quinoa genotypes in Egypt.
2. Statistically, analyses the data through clustering algorithm and principal component analysis.
3. Report degree of diversity and differentiation among Quinoa genotypes in Egypt, assessed using SDS-PAGE .

## Materials and Methods

### Sample Preparation

Five genetic structures of quinoa seeds (*Chenopodium quinoa*) were obtained from the Egyptian Agriculture Research Center, Cairo, Egypt.

### Flour preparation

Whole seeds were washed with cold water 4–5 times or until there was no foam to remove saponins, then oven-dried at  $45 \pm 1$  °C for 24 h or until being dry. The whole seeds were ground into flour using Miller (Proctor Silex model E160, UPC) with a sixty-mesh screen (Abugoch et al., 2008).

### Preparation of protein isolate

Quinoa protein isolates were obtained using isoelectric precipitation method at different pHs, (PH2, PH4, PH6, 5% NaCl). Samples were ground by liquid nitrogen using mortar & pestle and transferred the samples to Eppendorf tubes then ground with 1.5 ml distilled water, and the pH was adjusted to (2, 4 and 6) using 0.1 N NaOH and 0.1 N HCl. Then put the suspension in a water bath for 3 h at 37 °C, then centrifuged for 15 min at 10 000 rpm at 4°C. the supernatant was stirred for further analysis.

### Biochemical genetic studies.

Determination of total proteins by SDS-PAGE separation. Sodium dodecyl sulfate polyacrylamide gel electrophoresis (SDS-PAGE) was performed according to method of Laemmli (1970), to discriminate and finger Quinoa flour, with 5% of stacking gel and 12% of separating gel. Samples (20 µl) were prepared from 500 µl protein solution were added to 1 ml

buffer (distilled water, 0.5 M Tris-HCl pH 6.8, glycerol, 10% SDS, 1% bromophenol blue and β-mercaptoethanol) and heated at 98 °C for 10 min, then applied to the sample wells. (Elsohaimy, S.A et al., 2015). The standard protein marker (broad range molecular weight, Bio-Rad Hercules, USA), which contained (245, 180, 135, 100, 75, 63, 48, 35 and 25 KDa) was used as molecular weight standard. Electrophoretic migration was monitored at constant current (14 mA/gel) for 1.5–2 h. Gel was fixed with

fixing solution (water/methanol/acetic acid 700:200:100 ml) for 30 min and then stained with Coomassie Brilliant Blue R-250 for 1 h. The stained gel was destained by frequently changing the fixing solution until the excess stain disappeared.

### Statistical analysis

The data were analyzed using MStat version Software. One-Way-ANOVA analysis with  $p \leq 0.05$  was performed to identify significant differences among all studied parameters. All experiments carried out in triplicates.

## RESULTS

The mean values for morphological and seed yield traits are presented in table 1. Performance of quinoa varied greatly between genotypes in Egyptian conditions plant height ranged from 111.63 to 119.75 cm, with Q29 showing the lowest height 111.63 the three genotypes Q22, Q21, and Giza1 gave slightly higher records without significant difference. At the other hand genotype Q18 was significantly the tallest (119.75). Second morphological character was branches number per plant. Means of this character ranged from 20.38 in genotype Q22 to 21.63 in the two genotypes Giza1, and Q21. According to the statistical analysis, we do not notice any significant differences in the number of branches between all genotypes.

Concerning weight of the main head, significant differences noticed between means of the five genotypes. Main head weight gave lowest reading with the variety Giza1 (16 gram). Genotype Q18 record higher weight 18.125. Genotypes Q21 and Q29 was significantly higher than the variety with 19.38 and 20 gram. The greatest value for weight of the main head obtained from the genotype Q22.

Fourth studied trait was grain yield per plant. Lowest means were obtained from the two genotypes Giza1 and Q18 with 13.12 and 19.75 gram respectively, followed by Q21 with 16.75.

Remained two genotypes Q22, and Q29 record best results with means 19.38, and 19.5 consequently.

Regarding 1000-grain weight the variety Giza1 gave also weakest reading 3.21 gram, followed by the two genotypes Q18, and Q29 with 3.25, and 3.29 respectively. Genotype Q21 gave higher reading with mean 3.37. Q22 gave superior 1000-grain weight 3.49 gram.

Grain yield/ ha show weakest results with Q21, Giza1, and Q22 with means 2.14, 2.16, and 2.39 ton / ha respectively. Genotype Q18 was significantly higher 2.98. Genotype Q29 seems the best one as it gave 3.32 ton grain yield / ha

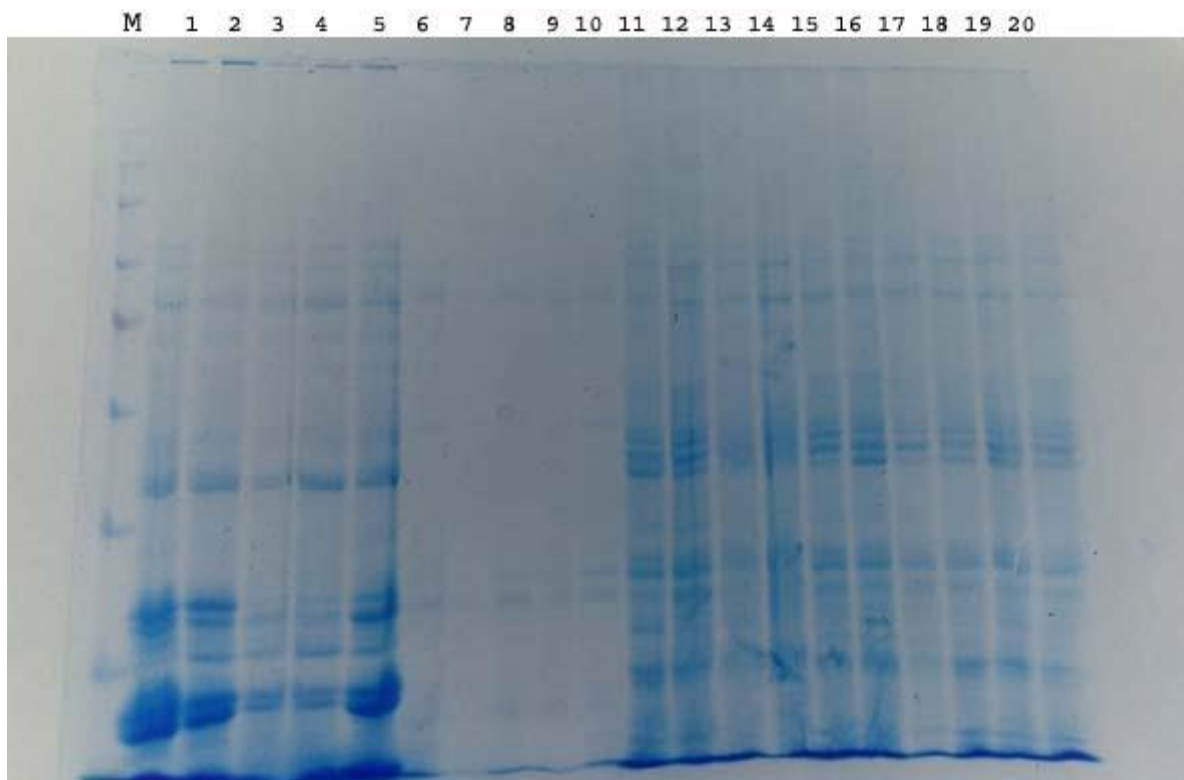
Regarding the character life cycle length all the five genotypes gave the same mean of life cycle 131.5 day.

**Table 1.** Plant height (centimeter), No of branches/plant, weight of main head (grams), grain yield/ plant(grams), 1000- grain weight (grams), , grain yield/ hect., and life cycle (day) for the four genotypes

<b>1/ Plant height (centimeter)</b>					
<b>G E N O T Y P E</b>	<b>Giza1</b>	<b>Q18</b>	<b>Q21</b>	<b>Q22</b>	<b>Q29</b>
<b>Mean</b>	114.625a	119.75b	113.5a	112.625a	111.625a
<b>LSD 0.05 :Between Genotypes = 3.58</b>					
<b>2/ No of branches/plant</b>					
<b>G E N O T Y P E</b>	<b>Giza1</b>	<b>Q18</b>	<b>Q21</b>	<b>Q22</b>	<b>Q29</b>
<b>Mean</b>	21.625	21.375	21.625	20.375	20.875
<b>LSD 0.05 :Between Genotypes (G) not significant (NS)</b>					
<b>3/ Weight of main head/ g</b>					
<b>G E N O T Y P E</b>	<b>Giza1</b>	<b>Q18</b>	<b>Q21</b>	<b>Q22</b>	<b>Q29</b>
<b>Mean</b>	16.0a	18.125ab	19.375bc	20.75c	20.0bc
<b>LSD 0.05 :Between Genotypes = 2.5</b>					
<b>4/ Grain yield/ plant</b>					
<b>G E N O T Y P E</b>	<b>Giza1</b>	<b>Q18</b>	<b>Q21</b>	<b>Q22</b>	<b>Q29</b>
<b>Mean</b>	13.125a	19.75a	16.75ab	19.375b	19.5b
<b>LSD 0.05 :Between Genotypes (G) = 3.94</b>					
<b>5/ 1000- grain weight</b>					
<b>G E N O T Y P E</b>	<b>Giza1</b>	<b>Q18</b>	<b>Q21</b>	<b>Q22</b>	<b>Q29</b>
<b>G. Mean</b>	3.212a	3.25ab	3.37bc	3.486c	3.295ab
<b>LSD 0.05 :Between Genotypes (G) = 0.13</b>					
<b>6/ Grain yield/ hect.</b>					
<b>G E N O T Y P E</b>	<b>Giza1</b>	<b>Q18</b>	<b>Q21</b>	<b>Q22</b>	<b>Q29</b>
<b>G. Mean</b>	2.155a	2.98b	2.144a	2.389a	3.317b
<b>LSD 0.05 :Between Genotypes (G) = 0.47</b>					
<b>7/ Life cycle (day)</b>					
<b>G E N O T Y P E</b>	<b>Giza1</b>	<b>Q18</b>	<b>Q21</b>	<b>Q22</b>	<b>Q29</b>
<b>G. Mean</b>	131.5	131.5	131.5	131.5	131.5
<b>LSD 0.05 :Between Genotypes (G) not significant (NS)</b>					

**Molecular Characterization of Proteins in Quinoa Flours by SDS- PAGE Results:**

Analysis of the electrophoretic patterns for quinoa proteins extracted in buffers with different PH values indicates in (Fig. 1).



**Fig. 1.** Fixed porosity SDS-PAGE of quinoa proteins soluble in different buffer systems. Lanes: 1,2,3,4 and 5 in buffer (5%NaCl); 6,7,8,9 and 10 in PH2 buffer; 11,12,13,14 and 15 in PH4 buffer; 16,17,18,19 and 20 in PH6 buffer. Fixed volume (10  $\mu$ L) of a protein solution was prepared and loaded in each sample lane. M, molecular weight markers with MW (245, 180, 135, 100, 75, 63, 48, 35 and 25KDa).

#### The effect of adding 5%NaCl on the protein extractability.

Total soluble proteins in all five samples (Giza1, Q18, Q21, Q22, and Q29) were resolved in 10 bands ranging from 177.8 KDa to 35.4 KDa. All five samples showed eight polymorphic bands at molecular weights (177.8, 144.9, 137.2, 114.7, 40.8, 37.4, 36.4 and 35.4 kDa), and two bands were monomorphic at molecular weights (

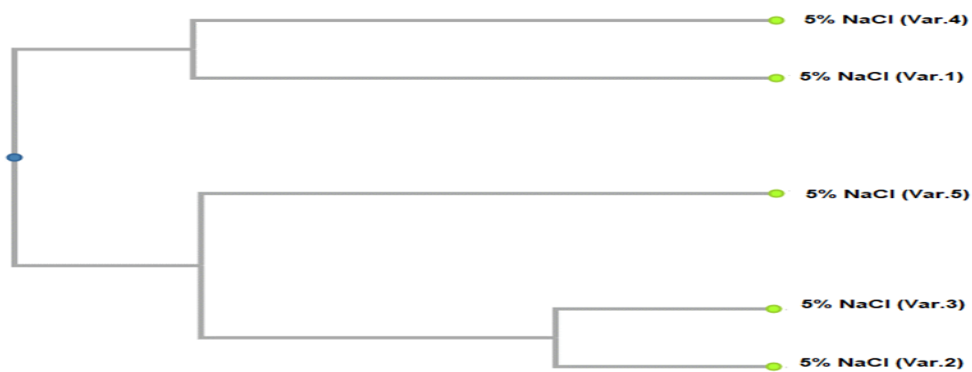
60.9 and 44.2KDa) were appeared in all genotype. Two bands (MW = 177.8 and 137.2) was identified only in one genotype Giza1. On the other hand, there were two bands not found only in the Sam genotype Giza1 the band (MW=40.8 and 37.4). Moreover, the band (MW=114.7) was disappeared only in one genotype Q18 and also the band (MW=35.4) was disappeared only in one genotype Q29.

**Table 2.** Similarity analysis for the protein profiles of all genotype extracted in 5%NaCl buffer.

Similarity Matrix computed with Jaccard coefficient					
	Giza1	Q18	Q21	Q22	Q29
Giza1	1	0.333	0.444	0.556	0.4
Q18		1	0.833	0.5	0.5
Q21			1	0.625	1
Q22				1	1
Q29					1

The dendrogram obtained from protein profiles grouped the five samples into two major clusters A & B (Figure 2) containing two samples in cluster A (Q22 and Giza). Three samples (Q29, Q21 and Q18) in

cluster B. Cluster B was sub-divided into two sub-clusters B1 & B2. Sub cluster B1 consisted of the sample Q29. Sub cluster B2 consisted of two samples (Q21 and Q18).



**Fig 2.** Dendrogram Showing cluster analysis dissimilarity estimates from protein profiles of all genotype extracted in 5%Nacl buffer.Var.1= Giza1, Var.2= Q18, Var.3=Q21, Var.4=Q22, Var.5=Q29.

**The effect of adding Protein Extraction Buffer pH2.**

Total soluble proteins in all five samples (Giza1, Q18, Q21, Q22, and Q29) were resolved in 10 bands ranging from 145.5 KDa to 35.8 KDa. All bands were polymorphic bands at molecular weights (145.5, 123.4, 115.5, 88.9, 73.1, 61.7, 47.5, 44.06, 37.5 and 35.8 kDa).The genotype Giza1 showed eight bands at different molecular weights, four bands (MW = 145.5,

115.5, 88.9 and 37.5) was identified only in genotype Giza1 and the other four bands were polymorphic bands. On the other hand, there were two bands appeared only in the genotype Q18 the band (MW=123.4 and 47.5KDa). Moreover, the genotype Q21 showed only one band (MW=61.7), also genotype Q29 had only one band (MW=73.1), but the genotype Q22 hadn't any bands.

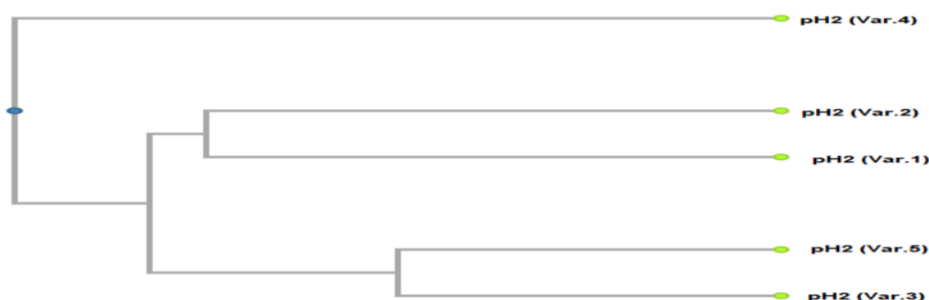
**Table 3.** Similarity analysis for the protein profiles of all genotype extracted in PH2 buffer.

**Similarity Matrix computed with Jaccard coefficient**

	Giza1	Q18	Q21	Q22	Q29
Giza1	1	0.25	0.167	0	0.333
Q18		1	0	0	0.2
Q21			1	0	0.5
Q22				0	1
Q29					1

The dendrogram obtained from protein profiles grouped the five samples into two major clusters A & B (Figure 3) containing one sample in cluster A (Q22 ). Four samples (Q18,Giza1,Q29 and Q21) in cluster

B. Cluster B was sub-divided into two sub-clusters B1&B2. Sub cluster B1 consisted of two samples (Q18 and Giza1) . Sub cluster B2 consisted of two samples(Q29 and Q21).



**Fig 3.** Dendrogram Showing cluster analysis dissimilarity estimates from protein profiles of all genotype extracted in PH2 buffer.Var.1= Giza1, Var.2= Q18, Var.3=Q21, Var.4=Q22, Var.5=Q29.

**The effect of adding Protein Extraction Buffer PH4**

Total soluble proteins in all five samples (Giza1, Q18, Q21, Q22, and Q29) were resolved in 17 bands ranging from (156.8 KDa to 34.8 KDa). All five samples showed ten polymorphic bands at molecular

weights(144.9,134.6,116.08,82.2,67.2,48.5,45.5,41.2, 39.7 and 34.8kDa), and seven bands were monomorphic at molecular weights ((156.8 and72.7 KDa) appeared only in genotype Giza1, 96.5KDa identified only in genotype Q29, 90.5KDa identified

only in genotype Q22, 53.4KDa identified only in genotype Q21 and two bands (MW = 62.4 and 36.2) was identified only in one genotype Q18). Moreover,

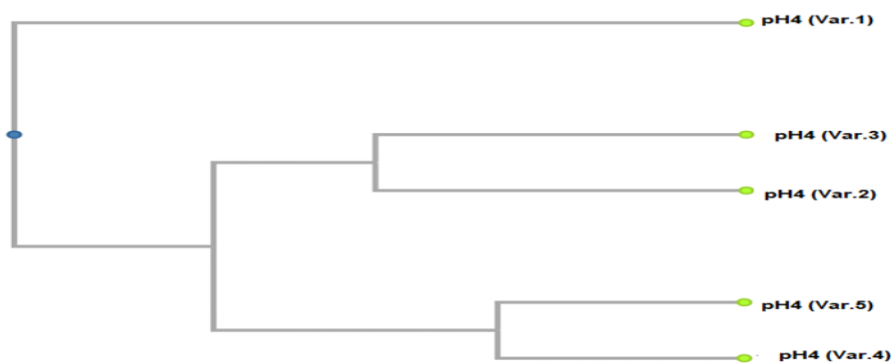
there were four bands not found only in the genotype Giza1 the band (MW=116.08, 67.2, 48.5 and 34.8).

**Table 4.** Similarity analysis for the protein profiles of all genotype extracted in PH4 buffer.

Similarity Matrix computed with Jaccard coefficient					
	Giza1	Q18	Q21	Q22	Q29
Giza1	1	0.25	0.125	0.286	0.375
Q18		1	0.625	0.444	0.5
Q21			1	0.5	0.4
Q22				1	0.75
Q29					1

The dendrogram obtained from protein profiles grouped the five samples into two major clusters A & B (Figure 4) containing one sample in cluster A (Giza1). Four samples (Q21, Q18, Q29 and Q22) in

cluster B. Cluster B was sub-divided into two sub-clusters B1 & B2. Sub cluster B1 consisted of two samples (Q21 and Q18). Sub cluster B2 consisted of two samples (Q29 and Q22).



**Fig 4.** Dendrogram Showing cluster analysis dissimilarity estimates from protein profiles of all genotype extracted in PH4 buffer. Var.1= Giza1, Var.2= Q18, Var.3=Q21, Var.4=Q22, Var.5=Q29.

#### The effect of adding Protein Extraction Buffer PH6.

Total soluble proteins in all five samples (Giza1, Q18, Q21, Q22, and Q29) were resolved in 13 bands ranging from 147.3 KDa to 34.9 KDa. All five samples showed eleven polymorphic bands at molecular weights (135.5, 117.9, 71.6, 67.02, 64.3, 48.6, 46.005, 43.5, 39.9, 36.4 and 34.9 kDa), and two bands were monomorphic at molecular weights 147.3KDa was identified only in

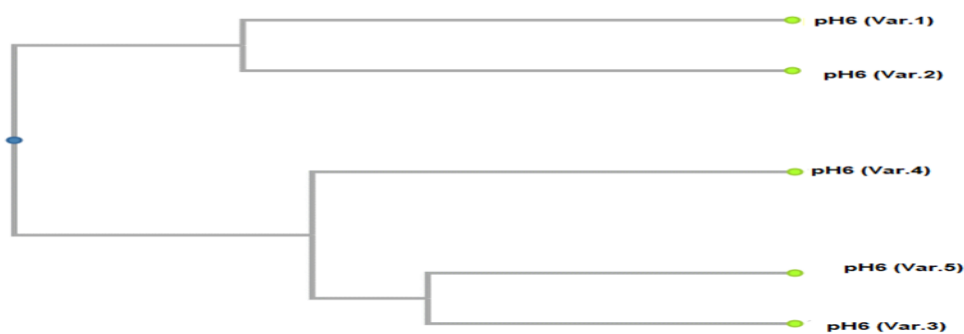
genotype Q22 and 84.4KDa was identified only in genotype Q18. The three polymorphic bands at molecular weights (117.9, 48.6 and 34.9KDa) were appeared in all five genotypes. Moreover the band at (MW=64.005KDa) was disappeared in only genotype Q18 but, the band at (MW=39.9KDa) was disappeared in only genotype Q21, also the band at (MW=36.4KDa) was disappeared in only genotype Giza1.

**Table 5.** Similarity analysis for the protein profiles of all genotype extracted in PH6 buffer.

Similarity Matrix computed with Jaccard coefficient					
	Giza1	Q18	Q21	Q22	Q29
Giza1	1	0.571	0.375	0.333	0.375
Q18		1	0.5	0.444	0.333
Q21			1	0.625	0.714
Q22				1	0.625
Q29					1

The dendrogram obtained from protein profiles grouped the five samples into two major clusters A & B (Figure 5) containing two samples in cluster A (Giza1 and Q18). Three samples (Q22, Q29 and Q21)

in cluster B. Cluster B was sub-divided into two sub-clusters B1 & B2. Sub cluster B1 consisted of the sample Q22. Sub cluster B2 consisted of two samples (Q29 and Q21).



**Fig5.** Dendrogram Showing cluster analysis dissimilarity estimates from protein profiles of all genotype extracted in PH6 buffer. Var.1= Giza1, Var.2= Q18, Var.3=Q21, Var.4=Q22, Var.5=Q29.

## Conclusion

We can conclude that the quinoa protein is a promising nutritive source and candidate for using as food supplement and functional food but still needs more advanced research to improve its functional properties to be suitable for using in food processing. Quinoa is a source of many nutrients like protein (which contained essential amino acids), fibers, fats, and carbohydrates. It might consume as a part of a balanced meal with many other food types to obtain overall good nutrition. The optimum conditions for preparing protein isolate from quinoa seeds were noted in two steps: (a) protein extraction at alkaline pH value with stirring for 120 min and adding 0.5 M NaCl and (b) isoelectric point precipitation at pH value. The protein profile on SDS-PAGE gel showed a high solubility at alkaline pH values (4).

## Acknowledgments

Authors are thankful to the Crop Intensification Research Department in Agricultural Research Center, Cairo, Egypt for obtained Quinoa seeds and, also they are thankful to the Agriculture Research Laboratories Park in Faculty of Agriculture at Benha University, Cairo, Egypt for providing the chemicals and facilities of this research work.

## Reference

- Ahamed NT, Singhal RS, Kulkarni PR, Kale DD, Pal M (1996b) Studies on *Chenopodium quinoa* and *Amaranthus paniculatus* starch as biodegradable fillers in LDPE films. *Carbohydr Polym* 31:157–160
- Abugoch, L.E., Romero, N., Tapia, C.A., Silva, J., Rivera, M., 2008. Study of some physicochemical and functional properties of quinoa (*Chenopodium quinoa* Willd) protein isolates. *J. Agric. Food Chem.* 56 (12), 4745–4750.

- Bhargava A, Srivastava S (2013) Quinoa botany, production and uses. CAB International, Oxfordshire
- Chauhan GS, Eskin NAM, Tkachuk R (1992) Nutrients and antinutrients in quinoa seeds. *Cereal Chem* 69:85–88
- Elsohaimy, S.A., Refaay, T.M., Zaytoun, M.A.M., 2015. Physicochemical and functional properties of quinoa protein isolate *Annals of Agricultural Science* 60(2), 297–305.
- Escuredo O, Inmaculada GMM, Moncada GW, Fischer S, Hierro JMH (2014) Amino acid profile of the quinoa (*Chenopodium quinoa* Willd.) using near infrared spectroscopy and chemometric techniques. *J. Cereal Sci* (in press)
- Food and Agriculture Organization (FAO), 1985. Food and Agriculture Organization of the United States/World Health Organization/United Nations University, Energy and Protein Requirements Report of a joint FAO/WHO/UNU meeting. World Health Organization, Geneva.
- Food and Agriculture Organization (FAO), 1998. Underutilized Andean Food Crops. Rome.
- Food and Agriculture Organization (FAO), 2014. Assessment of the international year of quinoa 2013. Hundred and forty-ninth session. CL 149/10. Rome, Italy.
- Fuentes F, Bazile D, Bhargava A, Martinez EA (2012) Implications of farmers' seed exchanges for on-farm conservation of quinoa, as revealed by its genetic diversity in Chile. *J Agric Sci* 150:702–716
- Giusti L (1970) El genero *Chenopodium* en Argentina 1: Numeros de cromosomas. *Darwiniana* 16:98–105
- Jacobsen, S.E., Mujica, A., Jensen, C.R., 2003. The resistance of quinoa (*Chenopodium quinoa* Willd.) to adverse abiotic factors. *Food Rev. Int.* 19, 99–109.
- Lindeboom N (2005) Studies on the characterization, biosynthesis and isolation of starch and protein from quinoa (*Chenopodium quinoa* Willd.), University of Saskatchewan Degree of Doctor
- Maughan PJ, Bonofacio A, Jellen EN, Stevens MR, Coleman CE, Ricks M, Mason SL, Jarvis DE, Gardunia BW, Fairbanks DJ (2004) A genetic linkage map of quinoa (*Chenopodium quinoa*) based on AFLP, RAPD and SSR markers. *Theor Appl Genet* 109:118–1195
- Stikic R, Glamoclija D, Demin M, Vucelic-Radicic B, Jovanovic Z, Milokovic-Opsenica D et al (2012) Agronomical and nutritional evaluation of quinoa seeds (*Chenopodium quinoa* Willd.) as an ingredient in bread formulations. *J Cereal Sci* 55:132–138

